



SAMANTHA
CURRY

561.530.2227 | SamanthaSellsPalmBeach.com
Broker Associate | Executive Director of Luxury Sales

DouglasElliman
elliman.com

THE REAL ESTATE AND TRADING BUSINESS IS SUBJECT TO VARIOUS RISKS. ANY INVESTOR SHOULD CONSULT WITH AN ATTORNEY AND FINANCIAL ADVISOR BEFORE MAKING ANY INVESTMENT. THE INFORMATION IS SUBJECT TO THE CREDIT OF THE INFORMATION SOURCE. THE REALTOR ASSOCIATE IS NOT RESPONSIBLE FOR THE ACCURACY OF THE INFORMATION. THE REALTOR ASSOCIATE IS NOT RESPONSIBLE FOR THE ACCURACY OF THE INFORMATION. THE REALTOR ASSOCIATE IS NOT RESPONSIBLE FOR THE ACCURACY OF THE INFORMATION.

BRAND-NEW PENTHOUSE | DESIGNER RENOVATED

Web# RX-10955703

3 BR + OFFICE | 3.2 BA | DEEDED CABANA | \$9,500,000

WATCH VIDEO

HOME&LOGGIA

Jonathan Savage offers a sneak peek at the handsome study he has designed for the upcoming Kips Bay Decorator Show House in West Palm Beach



A rendering shows the study designed by seasonal Palm Beach resident Jonathan Savage of SAVAGE Interior Design for the upcoming Kips Bay Decorator Show House Palm Beach, which opens to the general public Feb. 23 at a contemporary-style home in West Palm Beach. COURTESY SAVAGE INTERIOR DESIGN

Classic meets MODERN

Christine Davis Special to Palm Beach Daily New s | USA TODAY NETWORK

It’s an old question: Is it nature or nurture that forms who we are? In the case of seasonal Palm Beach resident and interior designer Jonathan Savage, both seem to play a part. • “My parents were in real estate, so I was always around it,” he says, about growing up in Nashville, Tennessee, where his interior design business is headquartered. • “To flex my creative muscles, since interior decorating was my passion, I always did it, whether I was dragging furniture across my parents’ hardwood floors or painting my bedroom Ninja Turtle green. My parents embraced my creativity and let me be.” • Savage will be among nearly two dozen design professionals whose work will be featured at the latest Palm Beach County edition of the Kips Bay Decorator Show House, which opens to the public for about a month of tours on Feb. 23 at a lakefront house in West Palm Beach. Admission to the preview day on Feb. 22 is by special ticket only.

See SAVAGE, Page 2B



Jonathan Savage, who founded SAVAGE Interior Design, has studios in Palm Beach and Nashville, Tennessee. ROSS GROUP CREATIVE/COURTESY SAVAGE INTERIOR DESIGN



McCANN
Palm Beach

Sea Street Oceanfront

Ideally sited on a 20,038 SF residential parcel with another 21,780 SF of direct Oceanfront, totaling 41,818 SF of superior Palm Beach real estate.
6 Bedrooms | 5.3 Baths | 8,948± TSF home

Premier Estate Properties
Presenting Properties Exclusively in Excess of One Million Dollars

CHRISTIE'S INTERNATIONAL REAL ESTATE

Jim McCann Group
561.655.5560
125 Worth Avenue, Suite 221
Palm Beach, Florida

DISCLAIMER: The written information provided has been obtained and conveyed from third parties such as the applicable Multiple Listing Service, public records as well as other sources. All written and verbal information including that produced by the Sellers or Premier Estate Properties are subject to errors, omissions or changes without notice and purchaser shall perform their own due diligence. Copyright 2024 Premier Estate Properties Inc. All Rights Reserved.





Jonathan Savage designed the open-air poolside cabana for the 2020 Kips Bay Decorator Show House Palm Beach at an estate in West Palm Beach. PHOTOS BY DOUGLAS FRIEDMAN/COURTESY SAVAGE INTERIOR DESIGN

Savage

Continued from Page 1B

The seventh annual show house will raise funds for the Boys & Girls Clubs of Palm Beach County and the Kips Bay Boys & Girls Club in New York City.

Savage studied at Tennessee’s O’More College of Design in Franklin before heading to New York to work in Manhattan.

He learned early on that success in the interior design field is often about the relationships forged with other designers.

“My mentor, Albert Hadley, connected me with David Kleinberg before I started my own company in 2010,” he says, referring to Savage Interior Design.

He describes his signature style as classic with a modern edge.

“I try to follow classical interior design standards, but I like modern, clean furnishings.”

Over his career, he’s taken part in multiple show houses, including the 2017 edition of the Kips Bay fundraiser in New York and the 2020 Palm Beach version.

For this year’s show house, he was assigned the decoration of the contemporary-style home’s study.

“Show houses are an opportunity for people to see my work, and I seem to always get work from them. Also, they are



In the poolside cabana Jonathan Savage designed for the 2020 Kips Bay Decorator Show House Palm Beach, louvered teak walls provided a backdrop for furniture by McKinnon and Harris and by David Sutherland.

See SAVAGE, Page 4B

THE PLAZA CONDOMINIUMS FLAGLER DRIVE



Spectacular sweeping views from this 24th floor two bedroom condominium residence.

More than 2,100 square feet of contemporary living including an east facing terrace with lake and ocean exposure.

Twenty four hour security with extensive services, two pools, exercise room, storage and two car parking.

\$2,950,000 pets permitted with restrictions.

Exclusive



LAWRENCE A. MOENS ASSOCIATES, INC.
Licensed Real Estate Broker

245 Sunrise Avenue • Palm Beach, Florida 33480
Tel (561) 655.5510 • Fax (561) 655.6744
www.moensrealestate.com



EQUAL HOUSING OPPORTUNITY PUBLISHER’S NOTICE:

All rental and real estate advertising in The Palm Beach Daily News is subject to the Federal Fair Housing Law which makes it illegal to advertise any preference, limitations or discrimination based on race, color, religion, sex, disability, familial status or national origin or any intention to make such preference, limitation or discrimination. In addition the Palm Beach County Fair Housing Ordinance prohibits discrimination based on age, marital status and sexual orientation, gender identity or expression. The Palm Beach Daily News will not knowingly accept any advertising that is in violation of the law. All persons are hereby informed that all dwellings are available on an equal opportunity basis. To complain of discrimination, call HUD toll-free 1-800-669-9777. The toll-free number for the hearing impaired is 1-800-543-8294.



CLASSIC REGENCY SEASONAL RENTAL



A gracious “one level” regency rental home available immediately.

This furnished residence is on a desirable street in the near north end.

Three bedrooms, four and one half baths with private pool area and two car garage.

\$45,000 per month.

Exclusive



LAWRENCE A. MOENS ASSOCIATES, INC.
Licensed Real Estate Broker

245 Sunrise Avenue • Palm Beach, Florida 33480
Tel (561) 655.5510 • Fax (561) 655.6744
www.moensrealestate.com





Jonathan Savage employed a stylish mix of contemporary furnishings in his own Palm Beach condominium on Ibis Isle in the Intracoastal Waterway. PHOTOS BY DOUGLAS FRIEDMAN/COURTESY SAVAGE INTERIOR DESIGN

Savage

Continued from Page 2B

a good way to give back to charities,” he says.

Savage is sharing vice-chairman duties for the upcoming show house with designer Billy Ceglia.

A longtime visitor to Palm Beach, Savage decided to buy a vacation home and open an office on the island after decorating the pool pavilion at the 2020 edition of the show house, which took place at an estate in West Palm Beach.


“After the show house, we ended up with some great projects on the island and in West Palm Beach, so it made sense to invest here,” Savage says. “We work across the country, with Nashville as my home base and Palm Beach as a secondary base. I’ve come full circle,” he says. “Currently, we are working on a fun project here with Michael Perry,” the principal of MP Design & Architecture in Palm Beach.

Savage shares a condominium on Ibis Isle with his partner, health care executive Bradley Wensel.

See SAVAGE, Page 5B







Jonathan Savage chose a dandelion-colored lacquered ceiling for the dining room of a client’s Nashville home to accent the Hervé Van der Straeten light fixture.



CHRISTIAN ANGLE
REAL ESTATE
TRUST | DEDICATION | PERSONAL COMMITMENT

18
YEARS




255 Ridgeview Drive, Palm Beach

Beautifully updated one story home in the Near North End. Featuring 4BR/4.2BA and 2 car garage. This light and bright home features fantastic open floor plan with eat-in kitchen, dining room, and living room with vaulted ceiling. Stunning hardwood and marble flooring throughout. Primary suite with charming bay windows, dual walk-in closets, and stunning bath. Private entry surrounded by lush tropical landscaping and beautiful pool area. Just one block to the Lake Trail and the beach.

Exclusive Offering - \$13,900,000

C 561.629.3015
T 561.659.6551
E cjangle@anglerealestate.com

www.AngleRealEstate.com



Though information is assumed to be correct, offerings are subject to verification, errors, omissions, prior sale, and withdrawal without notice. All material herein is intended for informational purposes only and has been compiled from sources deemed reliable.



\$6,495,000 - The Bellaria, 300 S. Ocean Blvd-Fabulous Direct Oceanfront Unit, Amazing Views! This 3 BD, 3.5 BA Lives Like a Home, 10 Ft. Ceilings, Dining Room, Eat in Kitchen, and Magnificent Oceanfront Terrace. Elevator to Unit, 3 Garage Spaces. Prestigious Full Service Bldg, Two Pets OK.



For Over 30 Years... “Specializing in Palm Beach Luxury Properties”
Linda R. Olsson, Inc., Realtor
GLOBAL REACH... LOCAL EXPERTISE...
UNRIVALED WEBSITE
Contact Us Today!
101 Bradley Place, Palm Beach 33480
(561) 820-9195 Cell: (561) 329-4044
Linda@LindaOlsson.com LindaOlsson.com



Savage

Continued from Page 4B

The participants in this year’s show will design rooms and rework outdoor paces at the five-bedroom, 8,589-square-foot home at 230 Miramar Way.

For his study, Savage envisioned a client who enjoys living in Florida and being outdoors but also enjoys having a space to be creative — “to write, to sketch, to curl up and read a book. He or she has traveled and is open to collecting beautiful art and showcasing it in interesting ways,” he says.

A Zimmer + Rohde fabric was his starting point. “I was inspired by maritime flags that I’ve seen at the Palm Beach Yacht Club. The complementary graphic pattern in the textured linen drapery fabric is very maritime. It adds texture and color. We also repeated the pattern in the upholstery of the arm-chair,” he says.

From there, Savage chose the room’s predominant color, which influenced his design choices for the rest of the room.

“I wrapped the walls and trimmed the bookcases and fluting in Benjamin Moore’s Mount Saint Anne blue with a gray undertone. It’s a versatile color. The room is just swathed in blues, and it’s kind of magic.”

He commissioned local artist Wil-

See SAVAGE, Page 6B



This photograph of the dining room Jonathan Savage designed for his Ibis Isle condominium in Palm Beach was used as the cover image of his upcoming book, “The Savage Style.” DOUGLAS FRIEDMAN/COURTESY SAVAGE INTERIOR DESIGN

If you go

The Kips Bay Decorator Show House Palm Beach will open to the general public Feb. 23 and run through March 17, 10 a.m.-4 p.m. Mon.-Sat., at 230 Miramar Way, West Palm Beach. General admission is \$40 with advance ticket purchase and \$60 at the door if available. Special tickets for a Feb. 22 opening day preview, noon- 8 p.m., start at \$400. For details and tickets, visit: KipsBayDecoratorShowhouse.org/PBPlanYourVisit.

The annual Kips Bay Decorator Show House Palm Beach will be open Feb. 23 to March 17 at this contemporary-style house at 230 Miramar Way in West Palm Beach. NICKOLAS SARGENT/SARGENT PHOTOGRAPHY/COURTESY KIPS BAY DECORATOR SHOW HOUSE PALM BEACH



THE BILTMORE



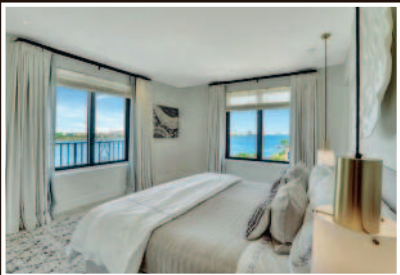
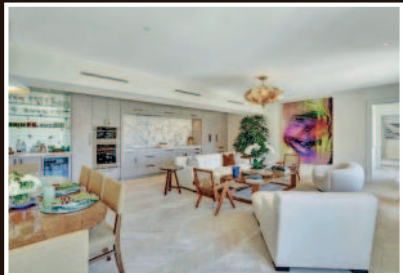
Absolutely stunning unit with new renovations of the highest caliber now completed.

Incredible northwest views to the lakefront from this wonderful seventh floor condominium apartment.

Lakefront pool, tennis, dockage and beach club.

Great facility. Great services. Great price.

\$8,200,000



Exclusive

LAWRENCE A. MOENS ASSOCIATES, INC.
 Licensed Real Estate Broker

245 Sunrise Avenue • Palm Beach, Florida 33480
 Tel (561) 655.5510 • Fax (561) 655.6744
 www.moensrealestate.com



CHRISTIAN ANGLE
 REAL ESTATE
 TRUST | DEDICATION | PERSONAL COMMITMENT

18
 YEARS



433 Flamingo Drive, West Palm Beach

Spectacular commercial space located in Downtown West Palm Beach. Minutes from Palm Beach Island, the Norton Museum, The Square, and so much more. The perfect opportunity for an art gallery or car storage.

Exclusive Offering - \$6,250,000

C 561.629.3015
 T 561.659.6551
 E cjangle@anglerealestate.com

www.AngleRealEstate.com



Though information is assumed to be correct, offerings are subject to verification, errors, omissions, prior sale, and withdrawal without notice. All material herein is intended for informational purposes only and has been compiled from sources deemed reliable.





Jonathan Savage designed this grand salon for a client’s Nashville home. ZEKE RUELAS/COURTESY SAVAGE INTERIOR DESIGN

Savage

Continued from Page 5B

liam Finlayson to paint four color-block oils to be displayed on Casa Metier fluted wall panels.

To add a sense of nature — specifically of the sea — he chose lamps for both sides of the sofa by Stephen Antonson, a Manhattan plaster artist. “They sort of remind me of coral or barnacles,” he says.

Other striking shapes include a pyramidal side table made of rock-crystal; and a 48-inch round wicker hanging light fixture from Currey & Co., which Savage says reminds him of a globe.

“I wanted a beautiful, classic space with clean modern lines, and having (been assigned) the study, I knew I wanted a beautiful desk, so I commissioned Keith Fritz Fine Furniture to make one for us. It’s a black-cerused oak, built to go under the double window with a nice garden view.”

The built-in, floor-to-ceiling book-

shelves will feature volumes of books and objets d’art.

“I just spent two weeks in Europe sourcing objects at the Paris flea market and in London. I found beautiful Spanish ginger jars — a crimson red — that are anchors of the bookshelves. And I found some plaster sculptures in Belgium,” he says. “I also found some Italian marble sculptures from Milan.”

A prototype of his first book, “The Savage Style,” to be published by Gibbs Smith and launched in September, also will be on display.

“It was 14 years in the making,” he says.

A design tenet mentioned in the

book, he adds, can be applied to his show house room. “Always make sure when you are designing a space that you add something of (exceptional) interest,” he says.

In the study, that role will be filled by the taupe, lacquered wall covering by Phillip Jeffries.

And Savage offers another key piece of advice. “Never forget the ceiling — it’s the fifth wall.”

Even though his study was designed to be a place of creativity and learning, there’s also a spot to kick back. The room has a bar, a picture-perfect place to “have a seat and have a beverage,” Savage says.



Architectural moldings and laser-cut marble flooring distinguish a dining space in a Nashville client’s house designed by Jonathan Savage. ZEKE RUELAS/COURTESY SAVAGE INTERIOR DESIGN



A tomato-red color scheme makes a strong design statement in the library of a Nashville home designed by Jonathan Savage. DOUGLAS FRIEDMAN/COURTESY SAVAGE INTERIOR DESIGN



CHRISTIAN ANGLE
REAL ESTATE
TRUST | DEDICATION | PERSONAL COMMITMENT

18
YEARS





L’Ermitage 301, Palm Beach

Beautiful 3BR/2.1BA unit in the fantastic, full service L’Ermitage condominium. Highlights include beautiful paneled library with built-ins, eat-in kitchen, and gorgeous views of the Intracoastal. Large primary suite with dressing area and walk-in closets. Light-filled great room perfect for entertaining. Additional features include two balconies, private elevator vestibule, impact windows, and poolside cabana.

Exclusive New Offering - \$6,795,000

C 561.629.3015
T 561.659.6551
E cjangle@anglerealestate.com

www.AngleRealEstate.com



Though information is assumed to be correct, offerings are subject to verification, errors, omissions, prior sale, and withdrawal without notice. All material herein is intended for informational purposes only and has been compiled from sources deemed reliable.